



Robotic Process Automation



## Snippets - Installation Guide

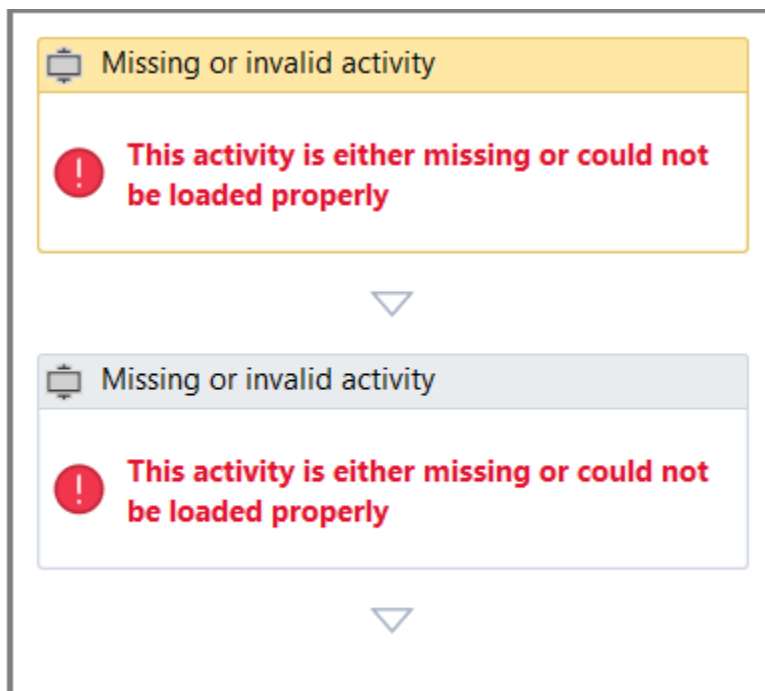
## How to Add a Snippet in UiPath Studio

To add a Snippet in UiPath Studio start with the below two steps.

After this, depending on your project needs, follow one of the two mentioned scenarios.

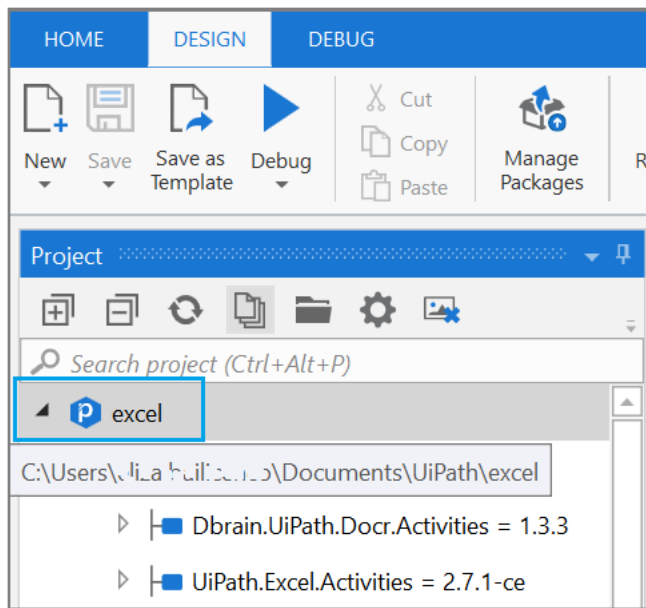
1. Open Studio and access a new or an existing project.
2. Access the Marketplace and download the needed Snippet.

Note: Please check the Snippet's dependencies and make sure you have them installed. If not, an error will be displayed when it will be added to a Studio project.

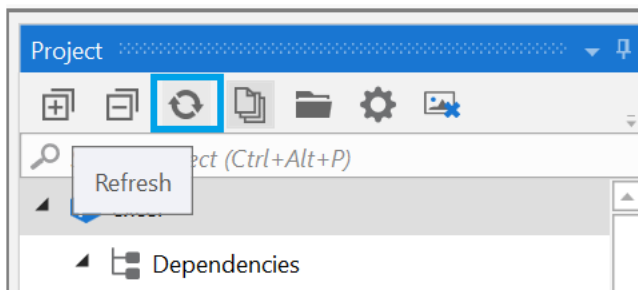


### A) Add a Snippet to a particular project:

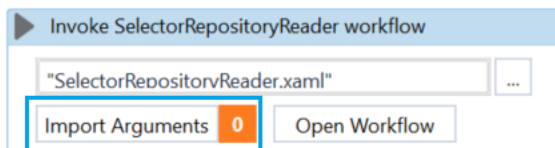
1. Access the project folder from your PC.  
You can do this by double-clicking the project name from the Studio project panel.

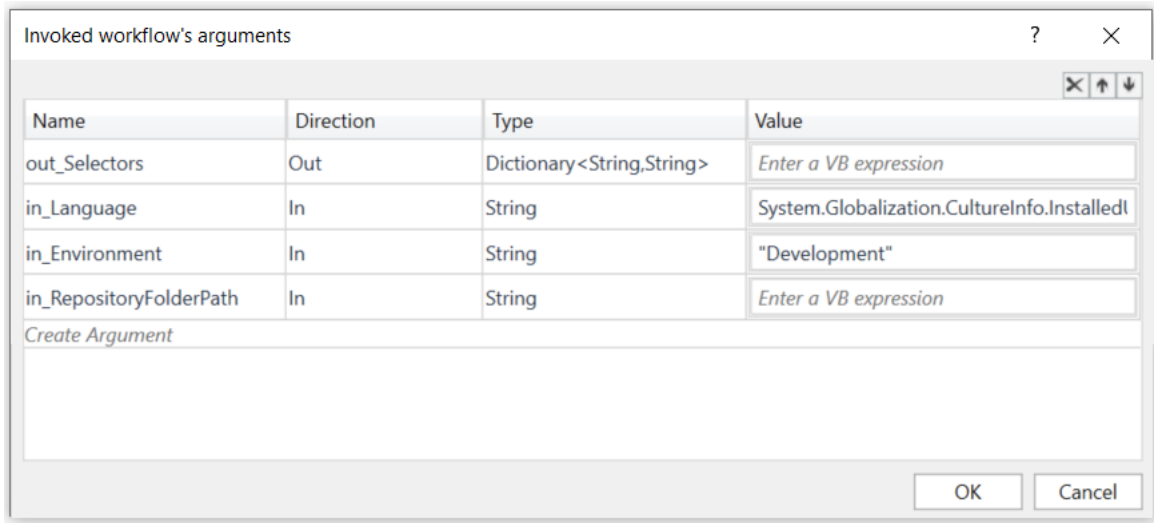


2. Add the Snippet in this folder.
3. Refresh the project.  
Use the Refresh option from the Studio project panel.



4. The Snippet should be displayed in your Project panel.
5. Drag and drop the Snippet in the main sequence where needed.  
Note: Make sure you import and configure the Snippet's arguments.





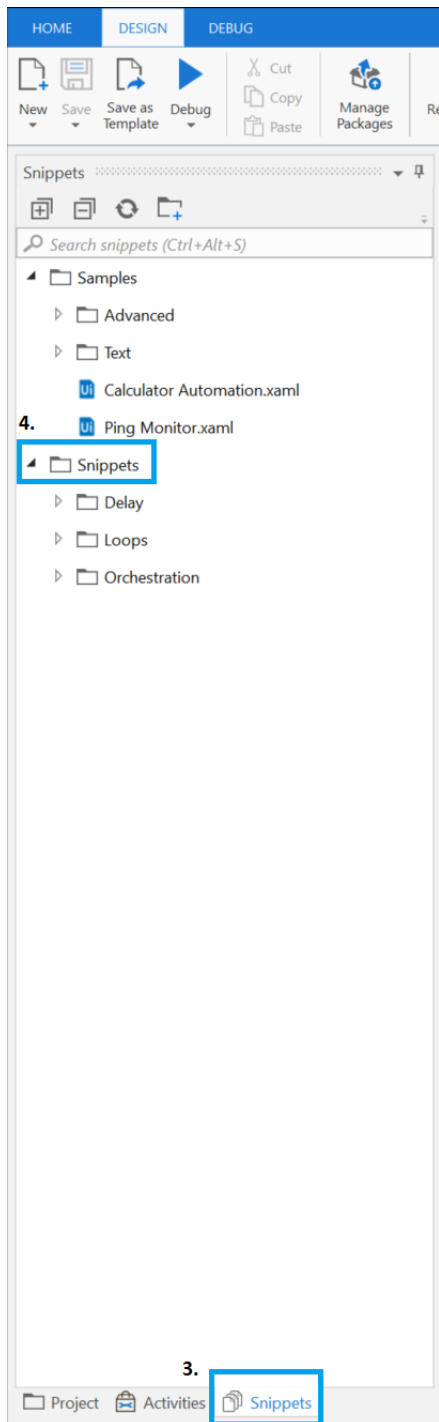
Name	Direction	Type	Value
out_Selectors	Out	Dictionary<String,String>	<i>Enter a VB expression</i>
in_Language	In	String	System.Globalization.CultureInfo.Installed
in_Environment	In	String	"Development"
in_RepositoryFolderPath	In	String	<i>Enter a VB expression</i>

*Create Argument*

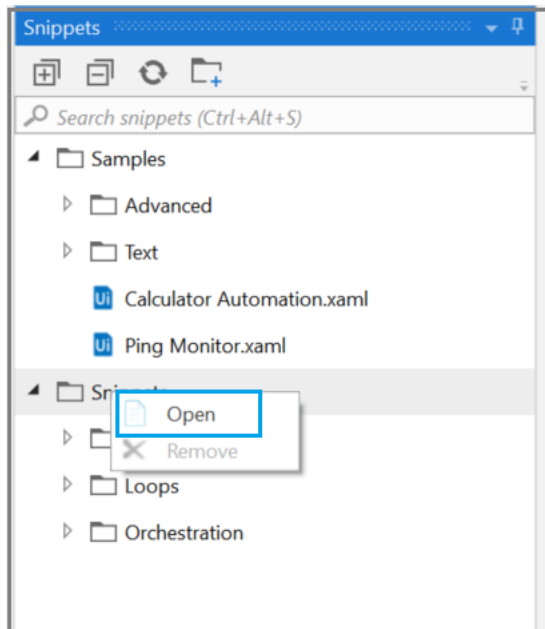
OK Cancel

## B) Add a Snippet in the Studio Snippets folder:

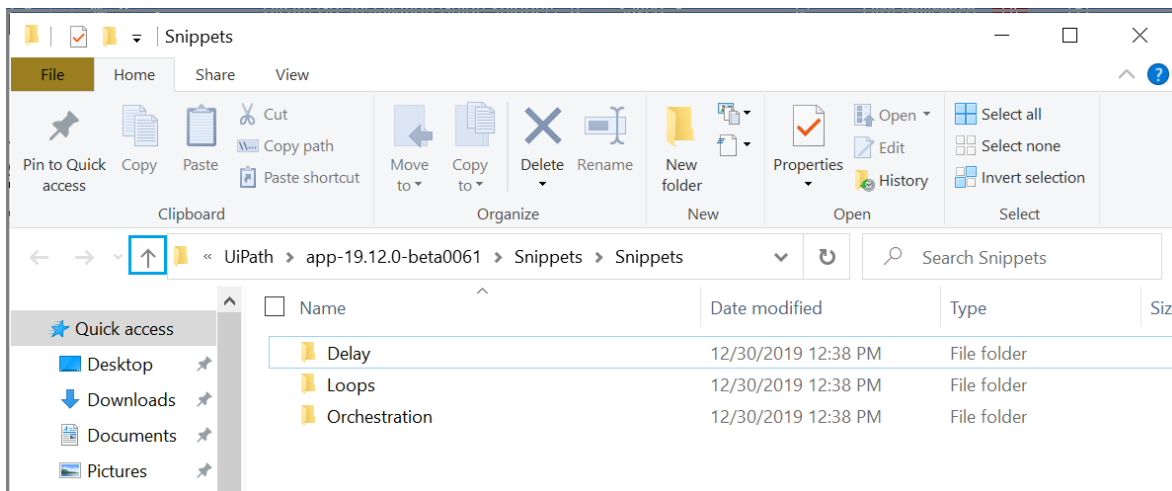
1. On the lower left-hand side corner of the page select the Snippets tab.
2. Right-click the Snippets branch.



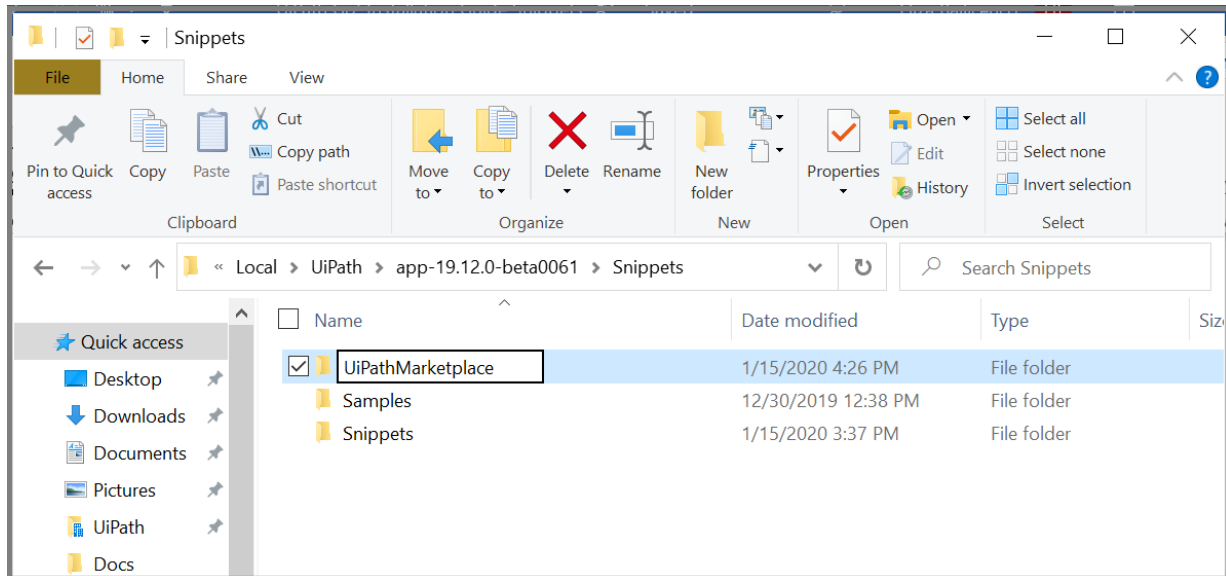
3. Click Open.



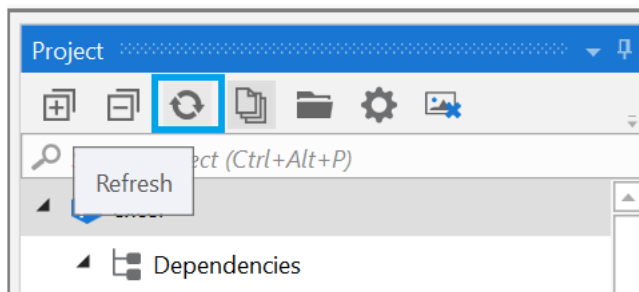
- In the newly opened explorer windows click the level up icon.  
This step is necessary in order to create a new branch at the same level as the existing ones: Snippets and Samples.



- Create a new directory and give it a relevant name.  
E.g. UiPathMarketplace  
Note: the newly created folder will not be displayed in Studio if there is no Snippet added.



6. Add your Snippet in this folder.
7. Refresh the project.  
Use the Refresh option from the Studio project panel.



8. The new folder and the added Snippet will be displayed in the Snippets branch.

