



Robotic Process Automation

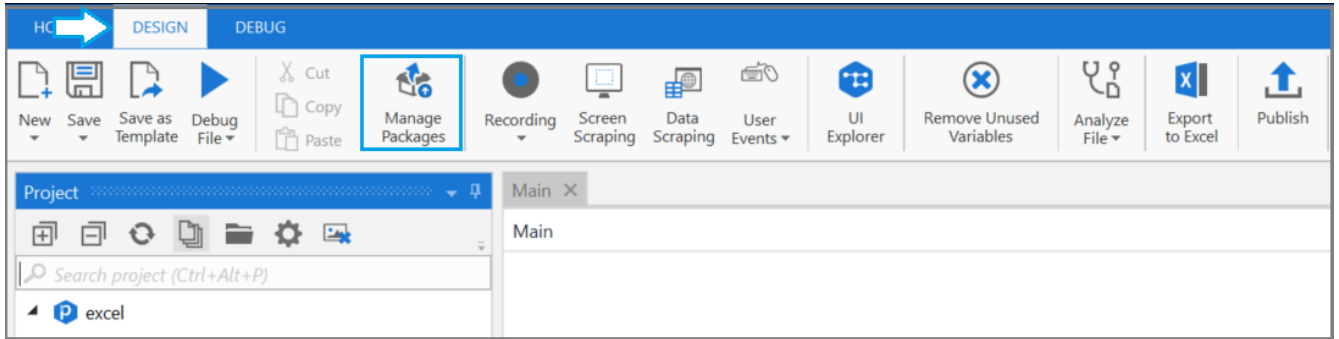


## Custom Activities - Installation Guide

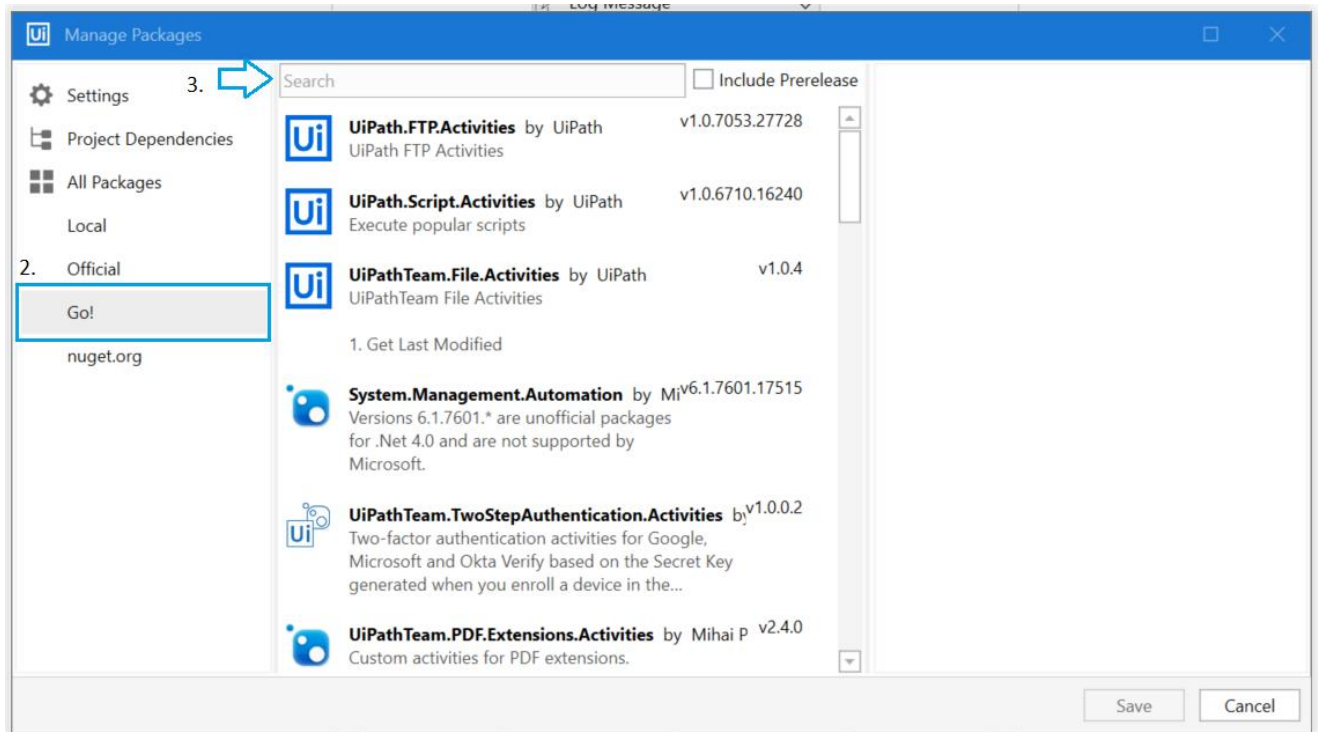
To add a Custom Activity in UiPath Studio start by opening Studio and access a new or an existing project. After this, depending on your needs, follow one of the two mentioned scenarios.

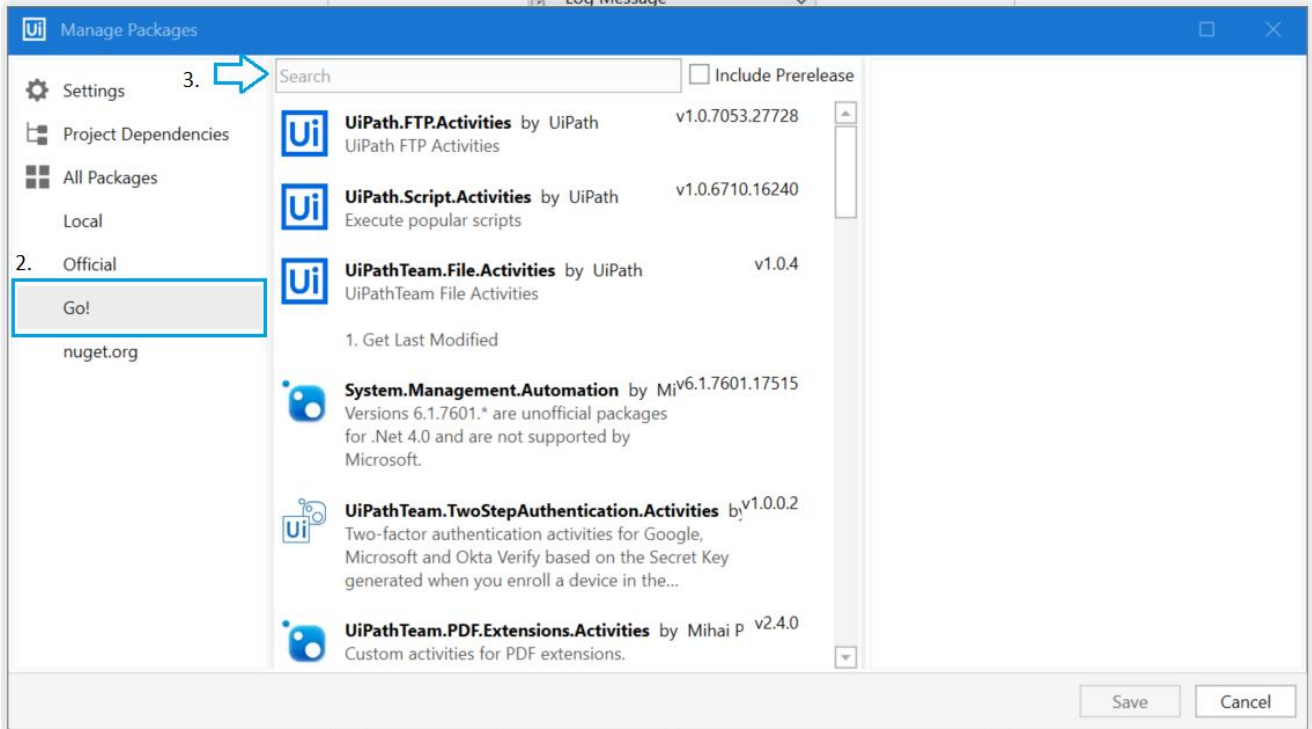
### A) Marketplace public feed direct integration in Studio

1. Access the Design tab and click Manage packages.

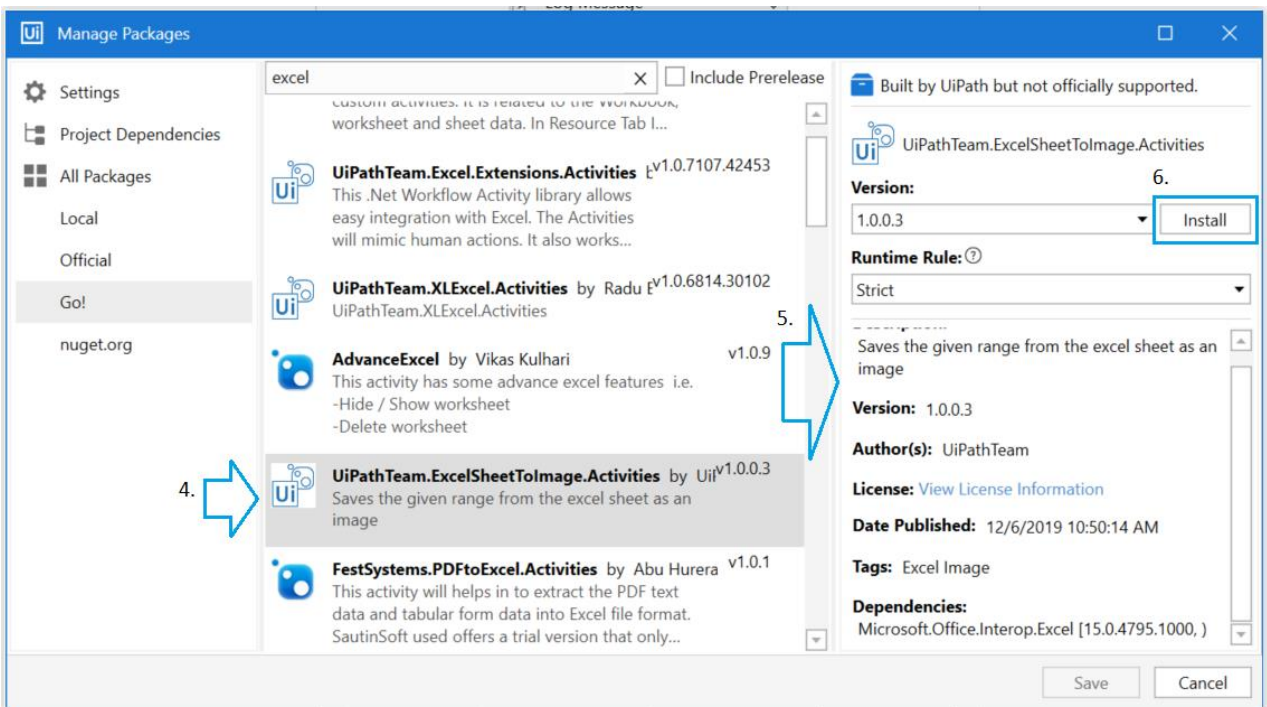


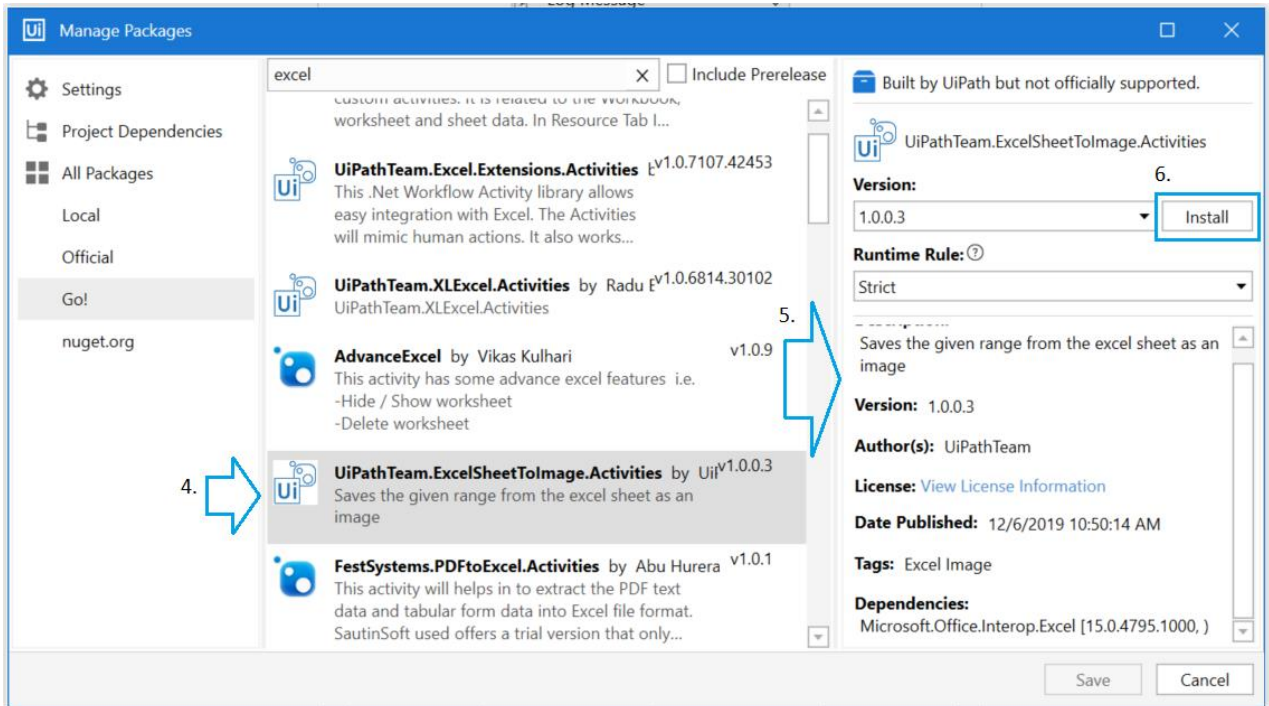
2. On the left hand side of the Manage Packages window click Go!
3. Use the search option to find the needed package.



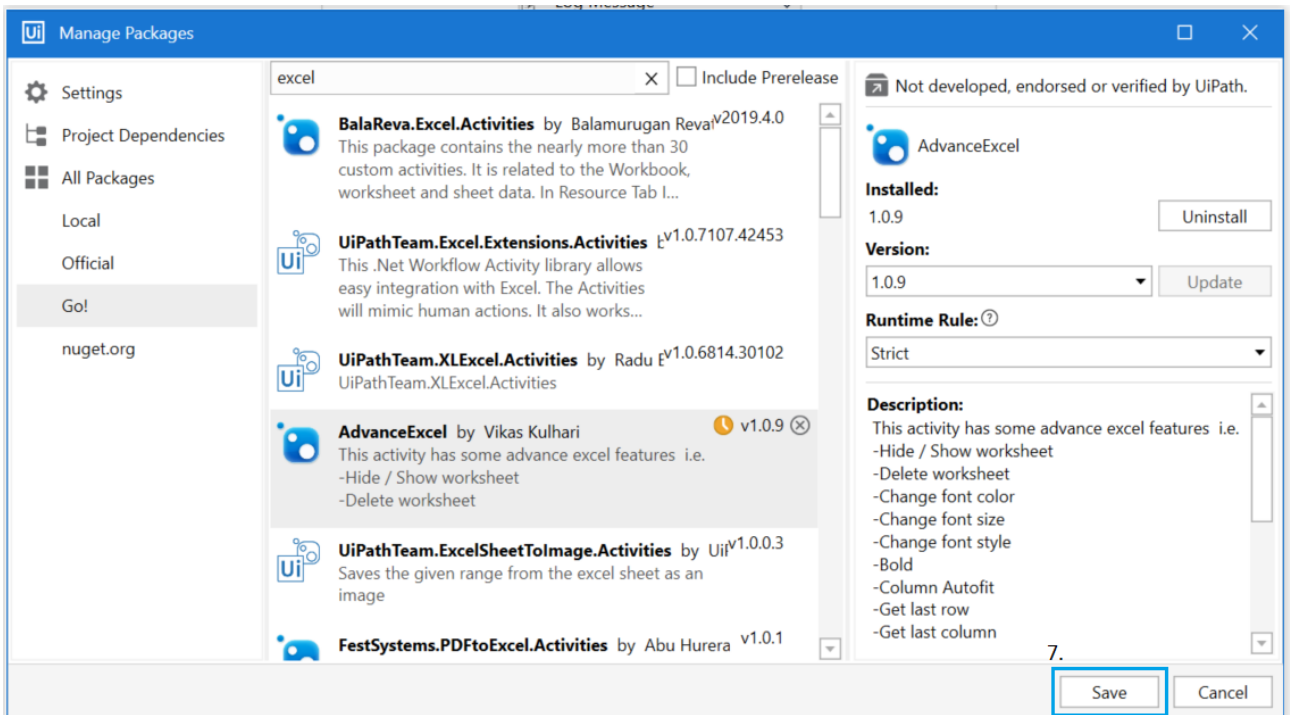


4. Select the package you are interested in.
5. The package info will be displayed on the right-hand side of the screen
6. Click Install.



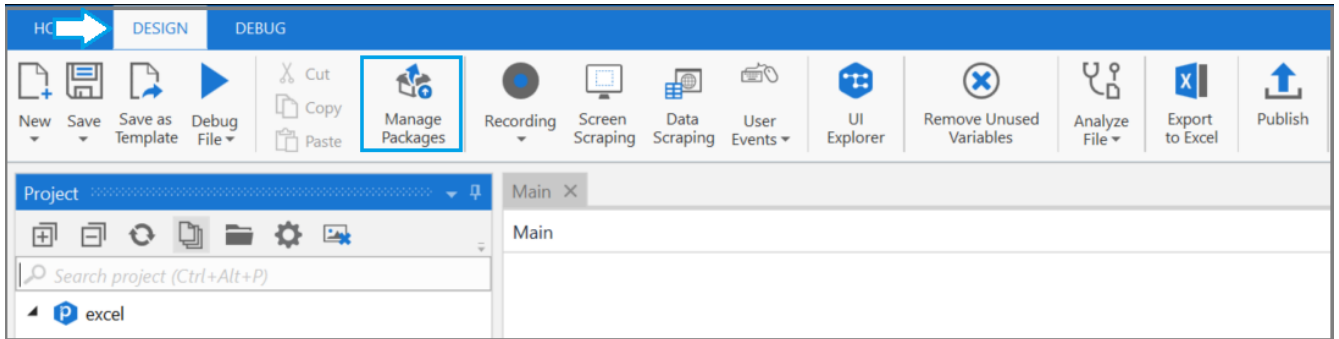


7. Click Save to confirm the package installation.

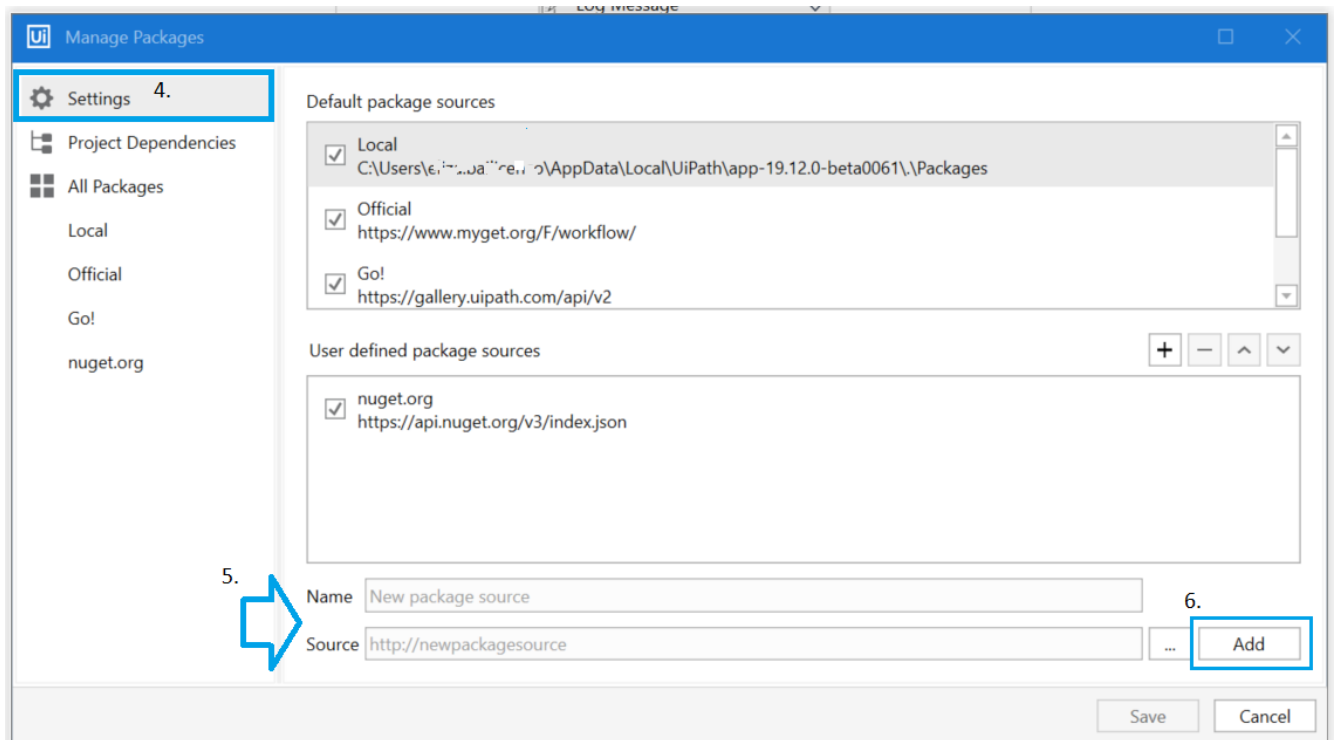


## B) Manual installation of a Custom activity in UiPath Studio

1. On your PC, create a folder where you can add all your Custom Activities.  
E.g. C:\Users\%username%\ActivitiesOutput”
2. Access the Marketplace and download the needed Custom Activity. Save it in the newly created folder.
3. Access the Design tab and click Manage packages.

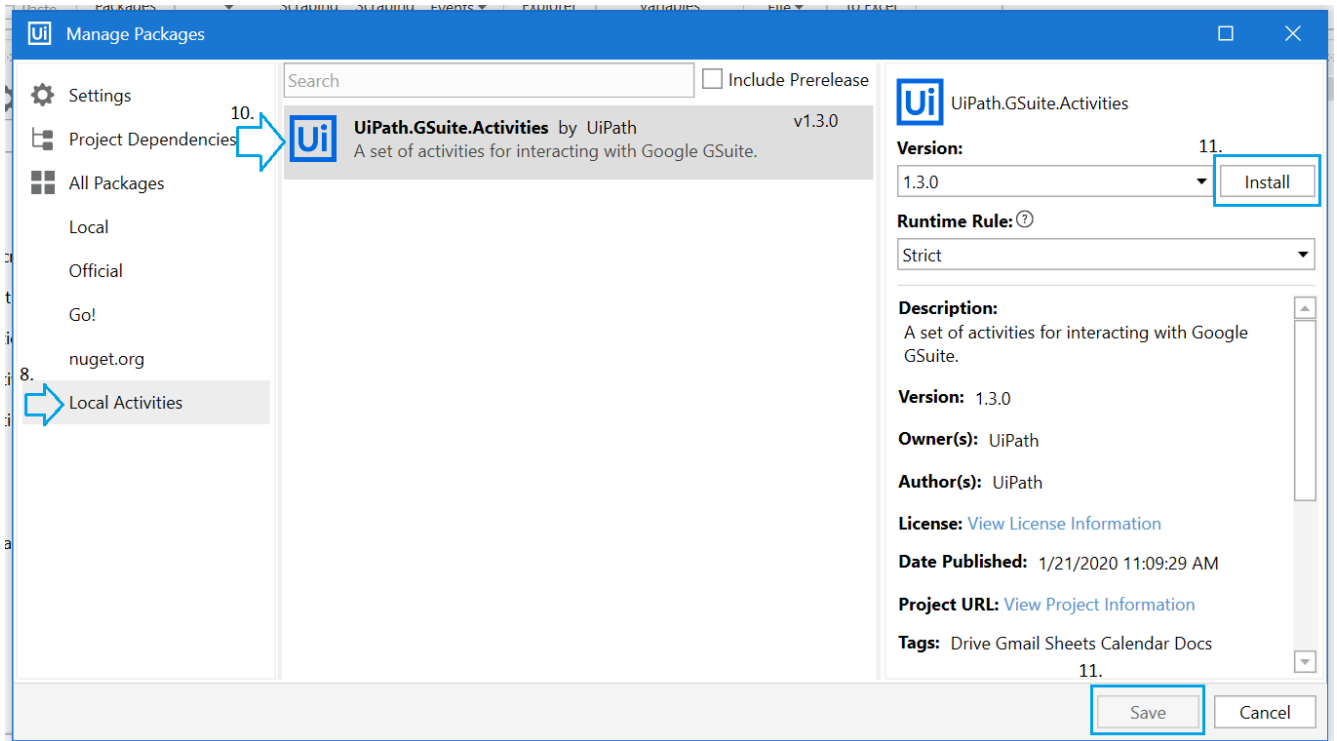


4. In the Manage packages window - click Settings
5. Fill in the Name (e.g. My Local Activities) and the source of the feed, this is the path for the folder mentioned at step 1.
6. Click Add.



7. On the left-hand side of the Manage Packages window the feed will be displayed.
8. Click it.

- 9. The activity downloaded from the Marketplace will be displayed.
- 10. Click it.
- 11. Click Install and Save.



- 12. The License Acceptance pop up will be displayed. Click View License and read the content. If you agree with the terms of use, click I Accept to continue the installation.

